

Presbyterian Church of Aotearoa
New Zealand

ST NINIAN'S PARISH NEWS

NOVEMBER 2023



A Matchbox from St Martins in the Field – gift from Mary Bullock.

This magazine was delivered by:

Phone number:

Completion of Church Strengthening Project



We have made the final payment on the church upgrade project, due 12 months after completion. The project was completed under budget, even with the added costs of fully painting the interior of the church, upgrading the electrical wiring in the church and refinishing of the floor. Some work needs to be done on the tower, but we have decided that this should wait until the completion of the redevelopment project which will require us to watch our cash resources carefully. Kelvin Chapman

Pam McKeachie and Megan Waddington, PSUSI, Community Liaison Officer.

Church Office Closure:

The office will close at 12pm on Friday 22nd of December and reopen on Wednesday January 10th. Messages can be left on the answer phone.

Condolences:

Our sympathy and prayers go to the families of Roger Keey, Daryl Johnston, and Jessie Dodd- (latterly living in Nelson) Our sympathy also goes to Hilary Cole whose brother, John, died recently.

Report of St Ninian's Ministry Settlement Board

The Ministry Settlement Board has continued to meet as required and following the suggestion from Parish Council has had a very positive meeting with St Martins MSB. It was agreed that there were considerable details to work through, but subsequent events have meant that that the idea of cooperation to achieve a full stipend needs to be put on hold. St Ninians MSB is meeting on the 13th of November to discuss this new development.

We have also received the resignation of Lesley Compton one of the Presbytery appointments to the MSB for health reasons and the Presbytery is looking for a replacement. I have advised Presbytery that there is no urgency and given our best wishes to Lesley.

Rev Hugh Perry, Interim Moderator

Standing Committee Report

- A Congregational meeting was held in June to discuss insurance on our buildings for the coming year. Costs have risen considerably. It was decided by the meeting that the hall and office block be insured for demolition and site clearance only, and that the lounges building and the church building be insured for Functional Replacement or agreed value. This provides cover for a lower value than total replacement on the basis that any replacement building will cost less due to size or choice of materials and includes demolition.
- The same Congregational meeting approved further expenditure of \$80,000 from the Property Investment funds held by PCANZ to cover costs associated with the subdivision and sale of land to the Methodist Mission and PSUSI.
- Parish Council met in July. We were informed that we need to find a new host for our website as the present one is closing down. Since then we have signed up with Webmad, a company Presbytery recommended. Our website address remains the same.

- We were asked to vote for the Moderator Designate. Our Council selected Rev Feiloaiga Taule'ale'ausumi from St Andrews on the Terrace, in Wellington.
- Code of Ethics: Presbytery requires us to display the Church's code of ethics, and to all abide by it. It is displayed in the church foyer.
- Carpet was laid in the vestry and a large cupboard was moved.
- Fire Safety: We now have a fire warden and are required to have a fire drill every 6 months. People on door duty will be assistant wardens and will assist people to leave the building, should there be a fire. Regular checks on the building are also required.
- Jane Catto has agreed to be our Privacy Officer, required by PCANZ.
- Samoan Group. We now have a group of Samoan people worshipping in the Riccarton Lounge at 2pm on Sunday afternoons
- The Annual Meeting was held on 8th October. The current members of Standing Committee were re-elected for the coming year, Pam McKeachie will continue as Parish Clerk, Kelvin Chapman was thanked and re-elected as treasurer.
- A working bee will be held on the 3rd Monday in January.
- Standing Committee recommends a Congregational meeting to be held on 12th November to seek final approval to subdivide and sell property, and to demolish the hall.

Farewell

Although we are always sad to farewell a member, on this occasion we are delighted that Betty Abbott is moving to Dunedin to live with her daughter and family. Betty joined St Ninian's in 1958 when her son, Chris began Sunday school. At the time Betty, husband Bob, and family were living in Puriri St. Betty was very involved with the Riccarton Community Activity Organization, Girls Brigade, magazine editing and many other activities, was our minute secretary for 15 years, and was an elder. Betty is a regular worship attender on Zoom, Our sincere thanks to Betty. We wish her well.

Women's Group

Two new women's groups are meeting at St Ninians, one on the first Wednesday of the month at 10:30 am and the other at 5:30pm on the 3rd Wednesday of the month. Both meet in the brick lounge behind the church.

These gatherings provide an opportunity to share fellowship and discussion around an agreed topic and to foster engagement in our own and the wider community.

The meetings are relaxed and informal, the morning one over a shared morning tea and the late afternoon one having a light evening meal provided. It is suggested an appropriate small donation be made at each meeting to cover any costs.

Rather than having formal management, a volunteer, or volunteers will be responsible for the gathering i.e. the topic for discussion and the refreshments. We can collectively attend to setting up and clearing up afterwards.

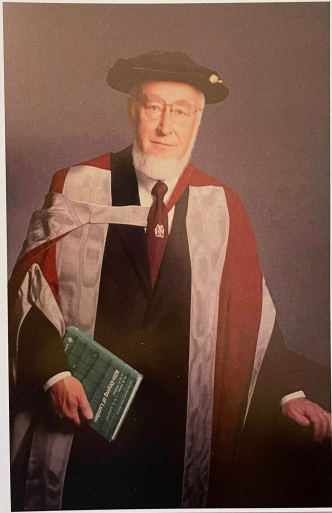
In a recent survey over twenty women expressed an interest in meeting with other women and these two groups were formed to meet this interest. The gatherings are open to any women. Come to one or both meetings as you wish. Bring a friend. The December meeting will be a parish tea for men and women.



Barbara Horne 022 3098312, Patricia Crumpton 022 5003587

IN LOVING MEMORY
ROGER BRIAN KEEY

11 March 1934 - 9 October 2023



A Tribute to Roger Keey

I first met Roger when he arrived at the Department of Chemical Engineering in 1962 as a lecturer and I was completing my Masters degree. We met again when Roger and Daphne joined St Ninians.

Later our professional paths crossed again when I returned to university as a mature student to start a PhD when Roger was appointed as my supervisor.

His interests were both wide and deep. His contributions to the profession have been covered elsewhere. But he was also a botanist with a deep knowledge of New Zealand flora. His two novels were perhaps less successful as they sought to bring a New Zealand context to current societal concerns.

He was also a man of strong opinions firmly held. I started my doctorate later in life with a firm view of what needed to be done while Roger had a very different view. Roger's view might have been the right way for a younger student in the field, but it did not fit what I saw from my experience. We parted on this point as good friends with another supervisor being appointed. I did finish that degree and I am sure that some of what I learned from Roger is in there.

Roger had a strong commitment to his church. He represented the parish of St Paul's as elder and served as the representative elder for that Parish on Presbytery, the regional body of the church.

When he and Daphne came to St Ninians he was inducted as an elder and served on the Parish Council. He also served a time as Presbytery elder for St Ninians. His contribution to the debates was always to the point, although it usually took some time to get there. And you could be sure that in our parish meetings it was Roger that could be relied on to ask the question that one hoped might slip past, making his point in a long drawn out explanation, with that very dry wit of his. Again, it was the question that needed to be discussed.

We saw that wit again in a parish celebration where Roger as Sir Roger de Clef in full costume was Master of the revels. He entertained us for the whole evening with stories and diversions. The wit we knew and expected, the character was new, but oh so memorable.

Roger, no doubt with much help from Daphne, organised a parish weekend at Hanmer. We went for walks, where Roger's botanical knowledge came to the fore. The next day was a bus trip that took us from Hanmer, over Jollies Pass into the Clarence river basin, past the St James track, over the Rainbow Pass to St Arnaud for lunch. Then down the Waiau to Blenheim, up the Awatere to Molesworth, down the Acheron and back across the Clarence to Hanmer. 13 hours in a bus tested our endurance, let alone that of the driver. All perfectly planned on a lovely day. But what a wonderful day – 5 major rivers in the north of Te Wai Pounamu in one day.

Another time he led a botanical walk along a track in Arthurs Pass, again with meticulous descriptions of what we were seeing.

We give thanks for the life of Roger among us. He challenged our thinking and broadened our horizons. He entertained us with his wit and made sure that we left no stone unturned. We will miss him for these reasons and for his friendship and his commitment to our community.

I can still remember my reaction to those lectures on drying some 60 years ago – they were very dry – and I find myself wondering what Roger's response to that would be.

Go well, Roger. By Kelvin Chapman

Parish Luncheons

Recently we have had two parish luncheons which have been a great success. Around 20 people attended each one. They are held in the brick lounge at the back of the church. Lunch is provided and a koha is appreciated. These gatherings provide an opportunity to catch up with friends and meet new people. We plan to have a luncheon bi-monthly. If you haven't already been, do come, and bring a friend. Everyone is welcome.

Barbara Horne



PSUSI – The Totara Group

In September Megan Waddington, the Community Relations Officer for PSUSI, met with Pam and Lance McKeachie to discuss the possibility of St Ninian's people donating small Christmas gifts to the people who meet at the Totara Group in the PSUSI Harakeke St complex. Megan suggested a few sweets or chocolates. She said there were about 65 members. Pam and Lance thought we would be willing to do that. Megan also offered to address the congregation about the work of PSUSI, particularly in the Christchurch area. Megan gave a presentation, including a power point of photos, on Sunday, 15th October. It was well received by the congregation. It was decided that the newly formed Women's Group that meets each 1st Wednesday of the month could put together gift boxes. Pam bought some lovely fold up boxes and she and Lance visited the Rainbow Sweets factory in Oamaru during their trip south. They were able to purchase a good variety of sweets.

On Wednesday, 1st November, there was a hive of industry in the Riccarton lounge as the group assembled the boxes, inserted the sweets, tied ribbon around the top, and attached a Christmassy sticker wishing the recipient a Merry Christmas from St Ninian's Church.



Redevelopment Committee Report Property Redevelopment

The Property Redevelopment Committee and the Project Manager have had several meetings since our last magazine. The architect has drawn up a few plans for us to consider and has also met with us. The project managers, Rangzen Pro, also investigated buying an existing building and moving it onsite, and then altering it to suit our needs. However, this was not an acceptable option.

PSUSI have been in conversation with Step Ahead Trust about purchasing the Step Ahead driveway. This would negate the need for firewalling part of their building. For this same reason PSUSI wish to buy part of the new Right of Way. This would mean that PSUSI, St Ninian's, Step Ahead Trust, and Methodist Mission housing would all be using the new Right of Way and sharing some of the costs.

In the plans that we have sent for cost estimates an accessible toilet and storage will go in the current lounge building, in the present kitchen space. A new tea/ coffee making station will be provided (possibly 1 in each of the lounges). The new community building will contain 2 offices, a toilet block, a kitchen, cleaner's cupboard, storage, and a large community room. It has double doors that open onto the courtyard. The building will be accessible from the church, via the ramp by the organ door, and have steps up to the front door.

Of course, all of this is up for discussion and approval by members of the congregation, and the plans will be available very soon. We are hopeful that the cost will be close to our budget but are aware that some fundraising will be necessary.

We are at the stage of seeking final approval from the Alpine Presbytery and the Church Property Trustees, to subdivide and sell property.

Christmas Services . . .

- Sunday, 3rd December is the 1st Sunday in Advent. Rev Dr Barbara Peddie will be leading worship. We will put up the Christmas tree for that day.
- Sunday, 10th December is the 2nd Sunday in Advent. Rev Hugh Perry will be leading worship.
- Sunday, 17th December 3rd Sunday in Advent, will be a carol service, led by the worship team. We will share a Christmas morning tea that day. Please have your donation items for the Methodist Mission family hamper in by this day.
- Sunday, 24th December, Christmas Eve, 9.30am. Our service will be led by Rev Stephanie Wells.
There will be NO EVENING SERVICE
- 25th December, Christmas Day, 9.30am. led by Rev Dr Barbara Peddie.
- Sunday 31st December, worship will be led by Anne Kay.



**St Ninian's
Presbyterian Church of Aotearoa New Zealand**

5 Puriri Street, Riccarton, Christchurch 8041

St Ninian's is a Christian community focussed on justice, compassion and inclusiveness, and the exploration of a spirituality relevant to the contemporary world.

www.stninians.godzone.net.nz

Interim Moderator: Rev Hugh Perry
Office: 348 6418
Personal: 388 0877
027 4992 107

Parish Clerk: Pam McKeachie 03 339 2913

Organists: Glenys Graham
Lois Dalton

Office Staff: Deb Coughlan 03 348 6418 [office]

Office hours: Wednesdays and Fridays: 8.30am – 12.00pm

Email stninians05@gmail.com